



# Model 7025

## **DUAL CELL PRESSURIZED CONSISTOMETER**

### **A Critical Tool for Oil Well Cementing**

The Model 7025 is designed for busy laboratories involved in: oil well cement research, research and testing of cement additives, cement quality assurance and the research and field laboratories of well service companies. This instrument can simultaneously perform two independent cement thickening time tests under a variety of downhole well conditions.

The Model 7025 combines the functionality of two high pressure high temperature (HPHT) consistometers into a single, smaller system. This saves valuable lab space.

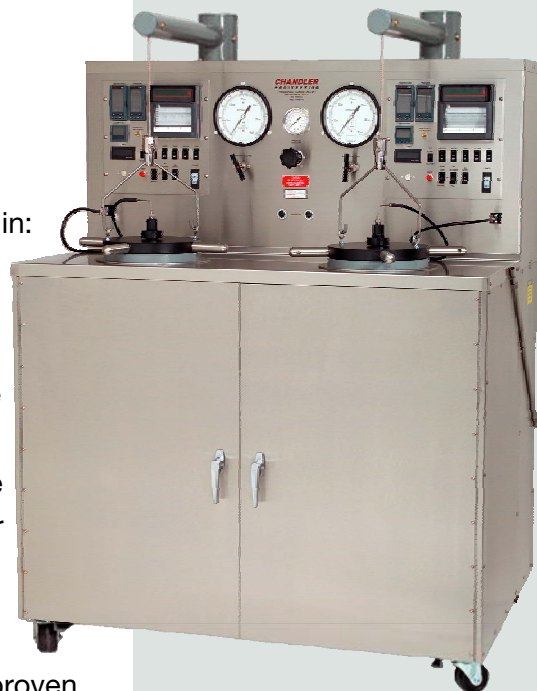
### **Proven Long-Term Performance**

The Model 7025 design is one of Chandler Engineering's most proven consistometers. Hundreds of units are in operation globally. Experience with these rugged instruments has demonstrated that their service lifespan is one of the longest of any consistometer with normal, routine maintenance. Every unit is tested extensively at the factory with standard cement to ensure that the instrument meets API / ISO requirements.

### **Operational Simplicity**

The Model 7025 Pressurized Consistometer is simple to operate with all of the operational controls conveniently located on the front panel. The unit is designed so that closure, heating and pressurization can be achieved quickly. The slurry cup drive automatically rotates the cup at the required, standard rate of 150 rpm.

Indicators for test time, consistency, pressure and temperature are readily visible on the front panel of the unit. A chart recorder automatically tracks the temperature and viscosity measurements during a test.



### **FEATURES**

- ✓ Two Independently Operated Test Cells
- ✓ Built-In Chart Recorders
- ✓ Accurate Temperature and Pressure Controllers with Multi-Slope Gradient Capability
- ✓ Adjustable Viscosity Alarm
- ✓ Magnetic Drive
- ✓ High Temperature, Metal Pressure-Vessel O-ring
- ✓ External Chiller Connections

The usefulness of the Model 7025 Consistometer is not limited to the standard testing of cement thickening time. It can also be used to prepare slurries for other tests such as measuring free water content, testing for fluid loss or rheological properties and viscosity. For enhanced research and testing capabilities, the 7025 can be equipped with an external chiller for performing tests at deep-water temperatures.

## Specifications

Maximum Temperature	400°F / 204°C
Maximum Pressure	25,000 psi / 172 MPa
Heater Power	4000 Watts
Slurry Cup Rotation Speed	150 rpm
Viscosity Range	0 to 100 Bc (Bearden Units)
Operating Temperature	40 to 120°F / 4 to 50°C
Pressure Medium	White Mineral Oil
Data Acquisition	Two channel strip chart recorder tracks temperature and consistency
Compliance	API Spec10A / ISO 10426-1

### Utilities

Cooling Water	20-80 psi / 138 – 552 kPa; nominal flow 2 lpm
Compressed Air	75-125 psi / 517 – 862 kPa;
Power Supply	240 VAC ±15% 50/60 Hz 7.5 kVa

### Shipping Information

Dimensions	56 in. x 38 in. x 75 in. / 143 x 96 x 190 cm
Weight	2400 lb / 1090 kg

*Manufacturer's specifications subject to change without notice*



#### CHANDLER ENGINEERING

2001 North Indianwood Avenue, Broken Arrow, OK 74012  
Tel: +1 918-250-7200 Fax: +1 918-459-0165  
e-mail: [chandler.sales@ametek.com](mailto:chandler.sales@ametek.com) [www.chandlereng.com](http://www.chandlereng.com)

#### Houston Sales and Service

4903 W. Sam Houston Parkway, N., Suite A-400, Houston, TX 77041  
Tel: +1 713-466-4900 Fax: +1 713-849-1924